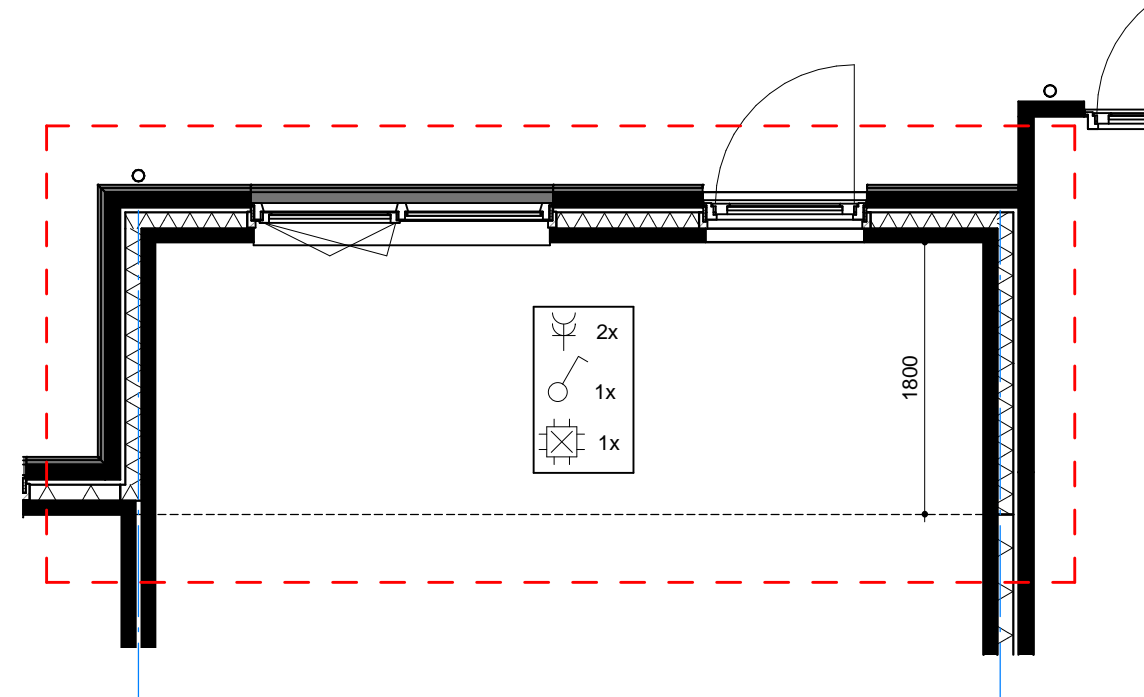
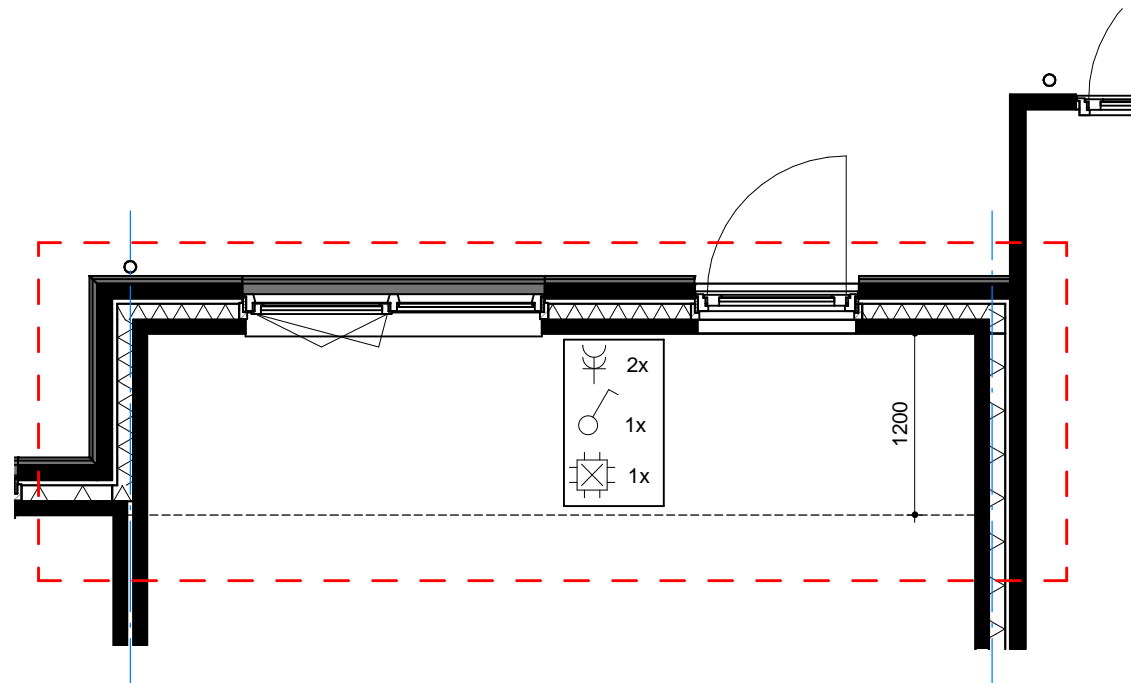


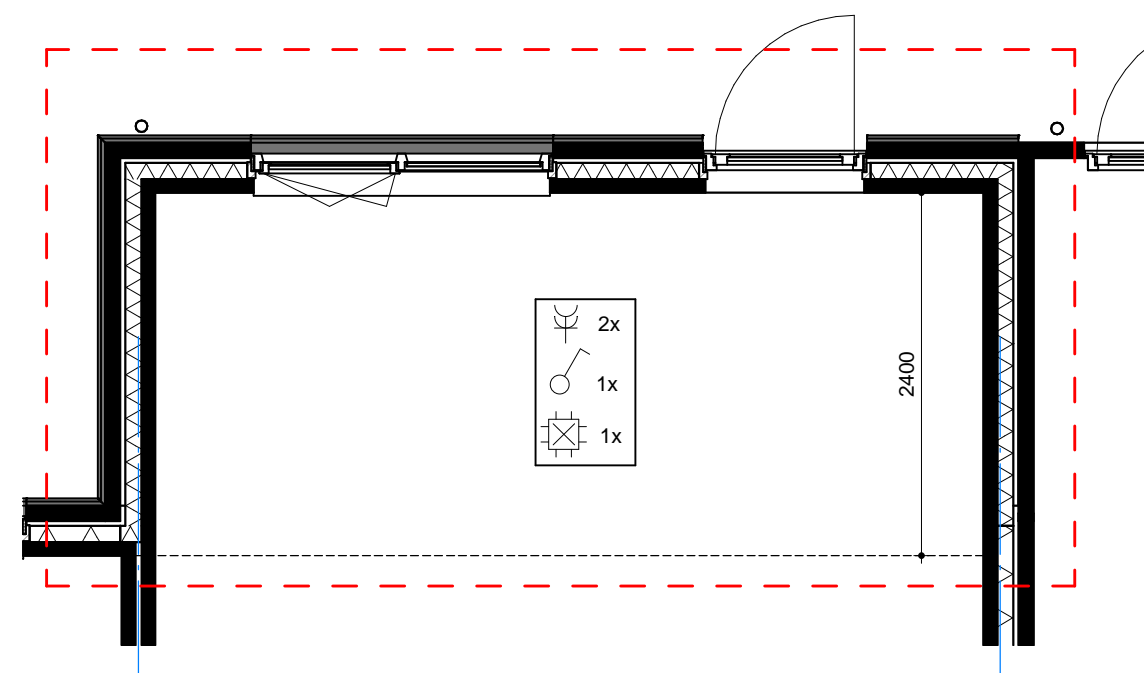
Achtergevel: uitbouw type C-D



9313400 Uitbouw 1.800mm x 5.700mm



9313300 Uitbouw 1.200mm x 5.700mm



9313500 Uitbouw 2.400mm x 5.700mm

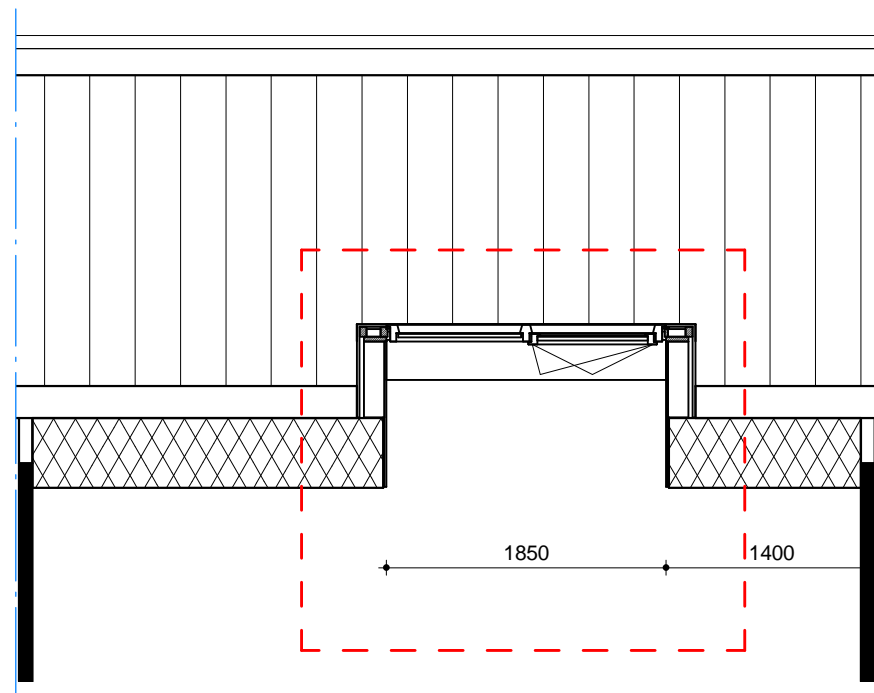


Project 15265.005 Nieuwbouw 96 woningen plan Vierslag te Elst

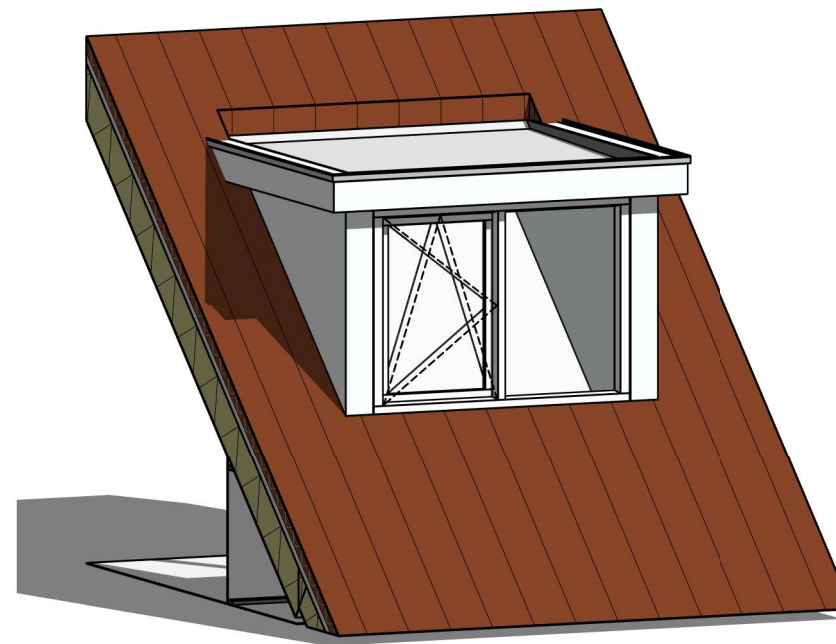
Blad 280-0-102 Uitbouwen Woning type C+D Verkooptekeningen Bouwkunde

Versie 4 28-09-2015 Definitief RGr EH Schaal 1:50

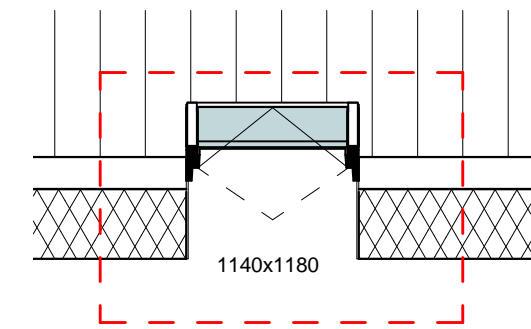




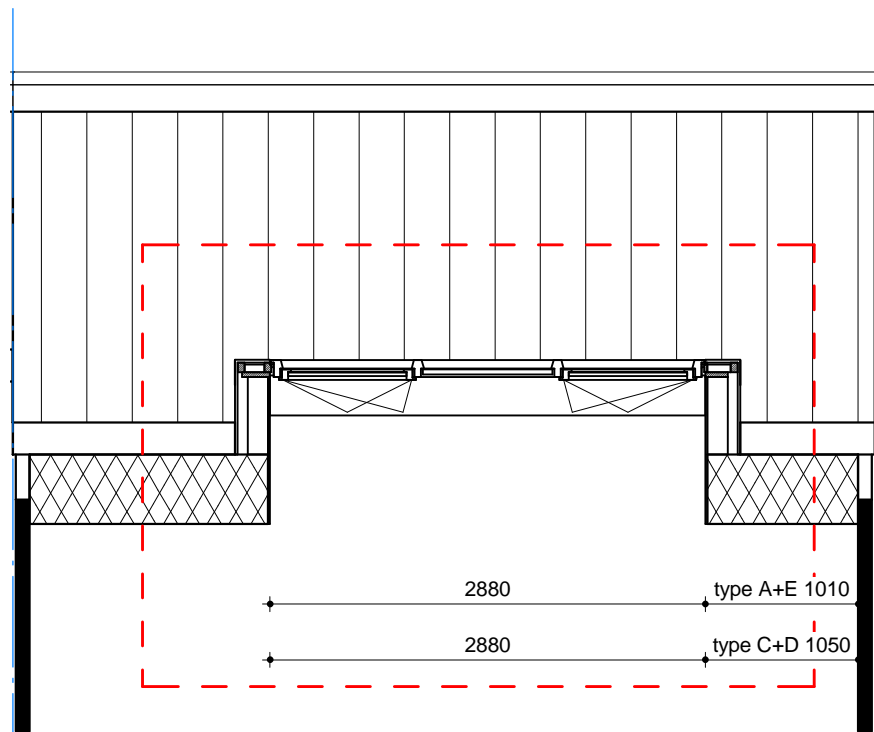
9312400\_dakkapel-1850



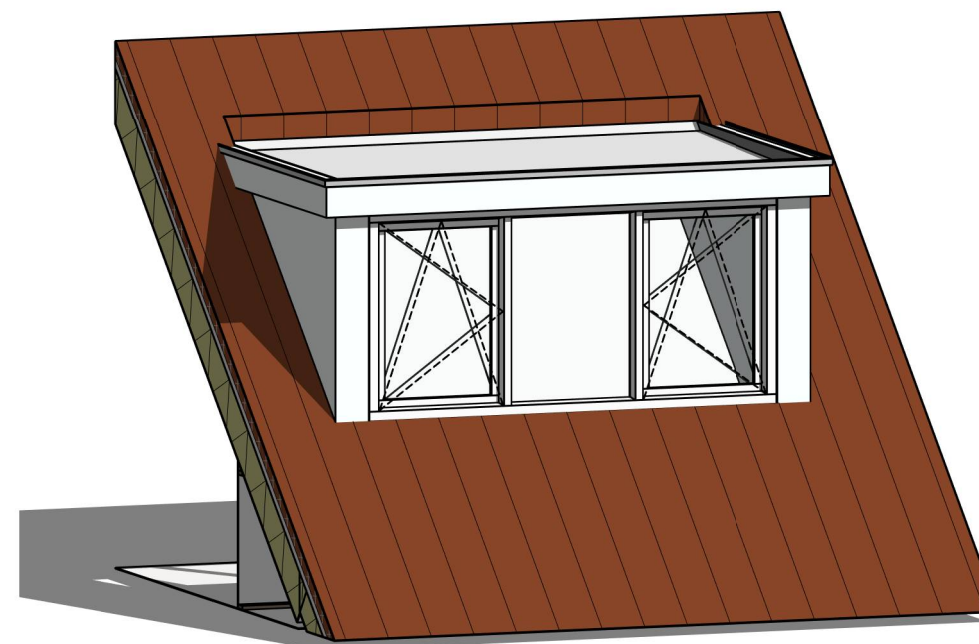
9312400\_3D\_dakkapel-1850



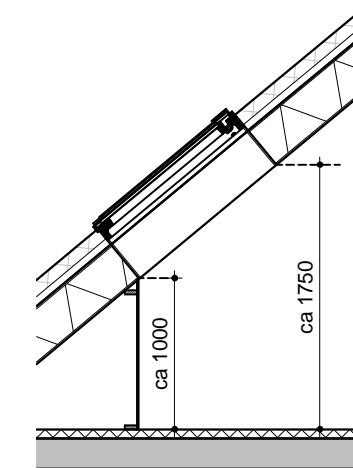
9500600 plaatsen dakraam



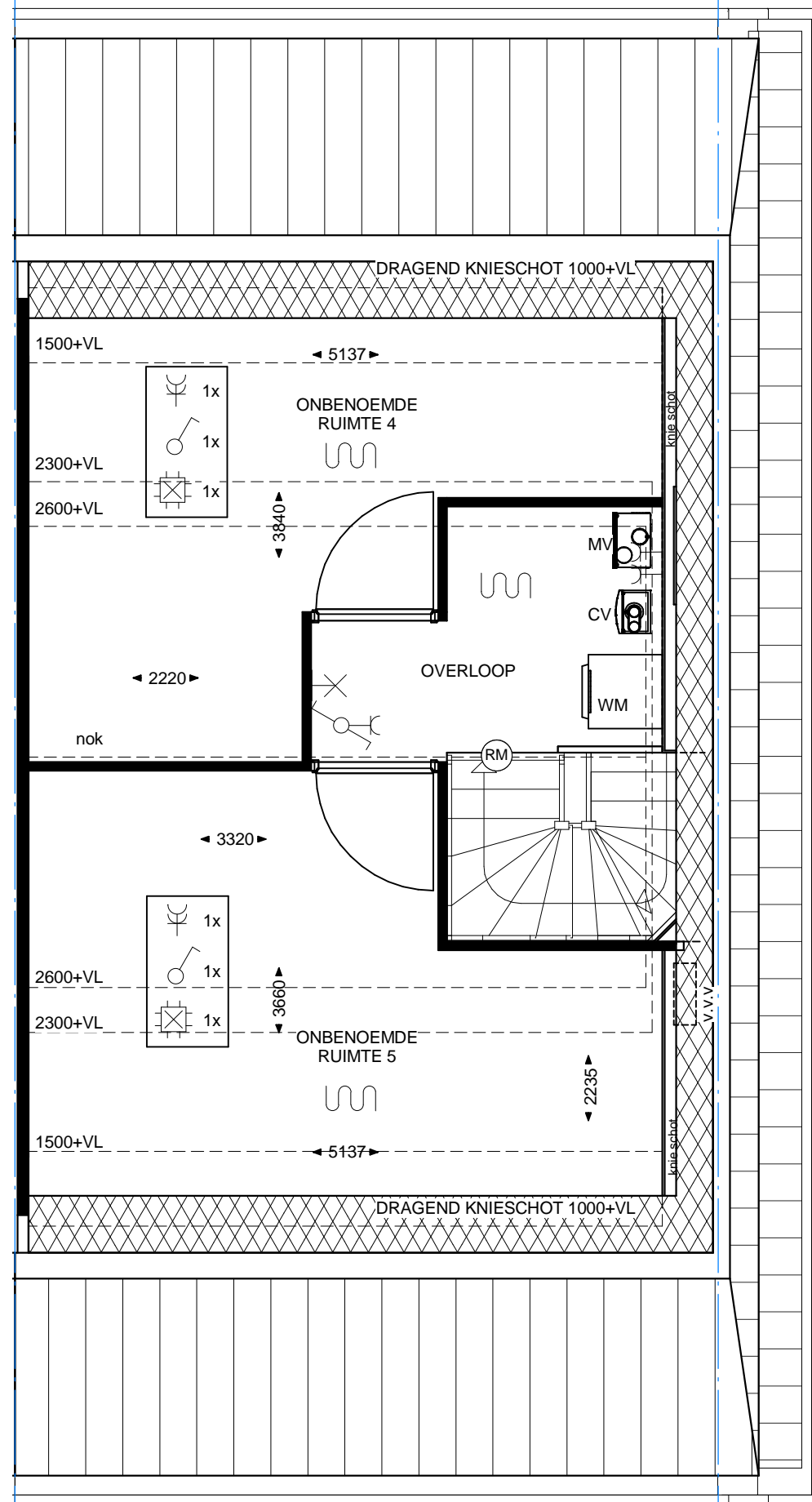
9312500\_dakkapel-2880



9312500\_3D\_dakkapel-2880



9500600 Doorsnede dakraam



9301300\_indeling zolder type C-D

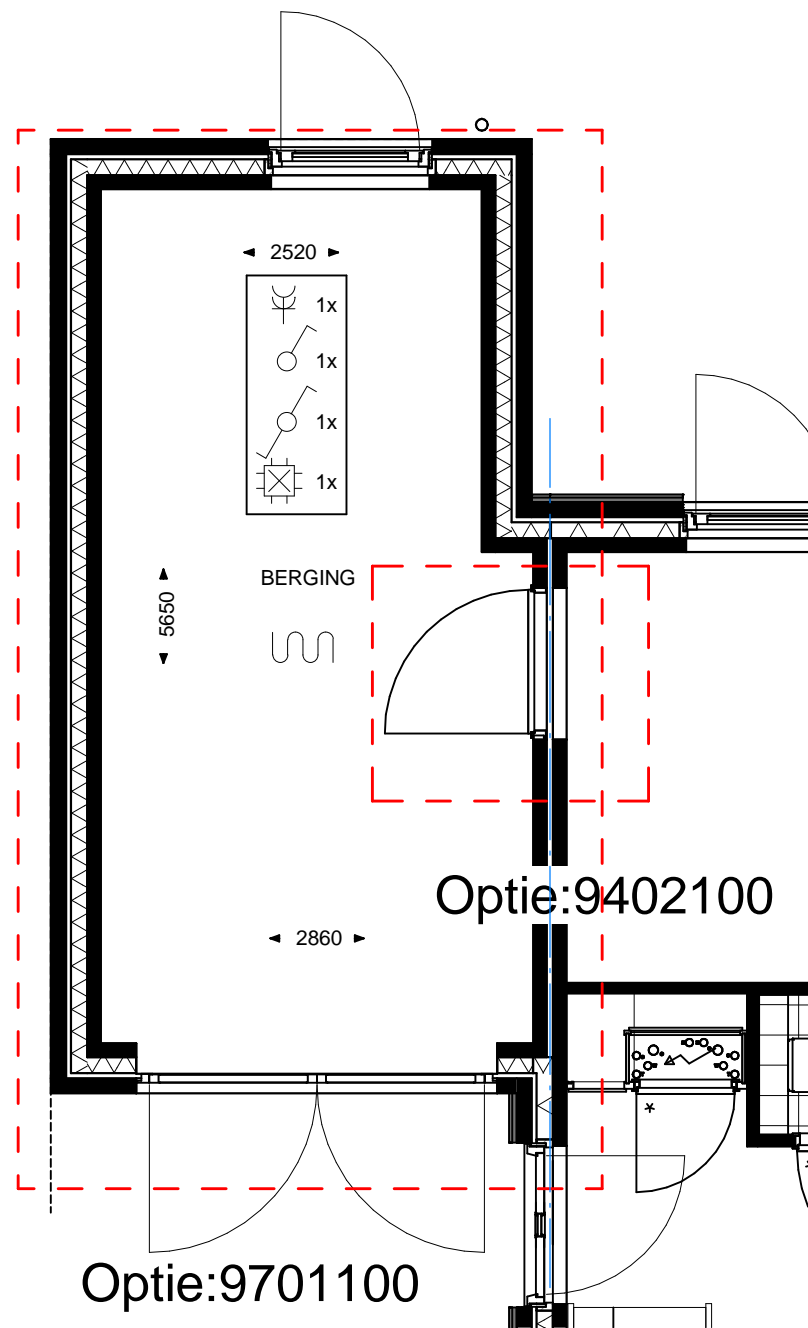


Project  
**15265.005** Nieuwbouw 96 woningen plan Vierslag  
 te Elst

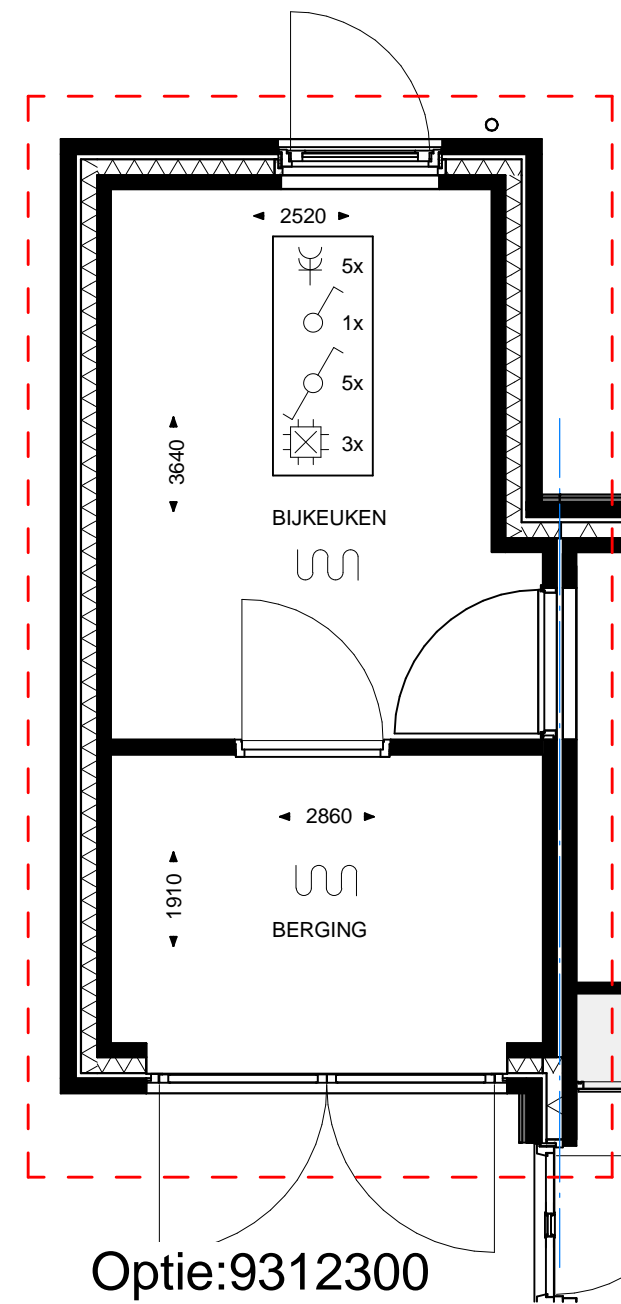
Blad  
**280-0-105** Ingedeelde zolder Type C-D  
 Verkooptekeningen Bouwkunde

Versie 4 28-09-2015 Definitief RGr EH Schaal 1:50

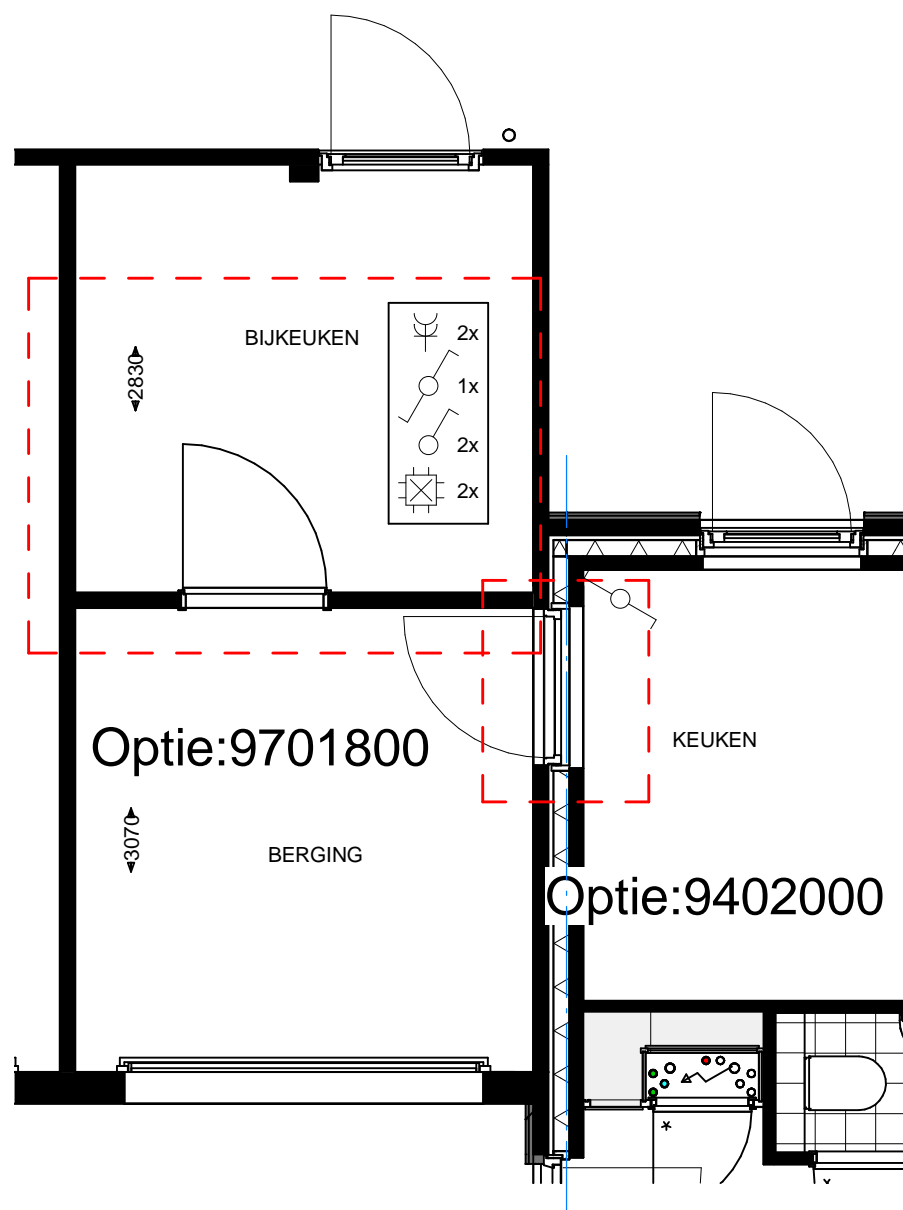




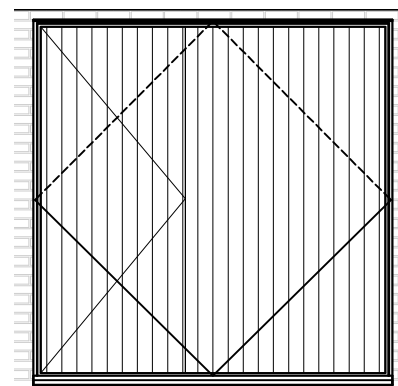
9701100\_geisoleerde berging - 9402100\_loopdeur woning naar berging



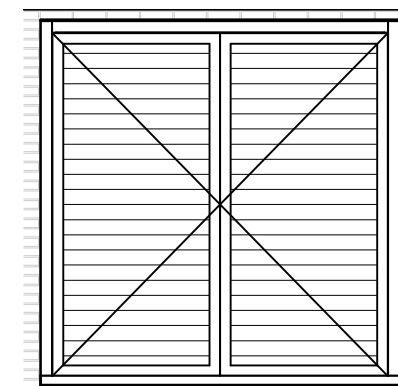
9312300\_geisoleerde berging met bijkeuken



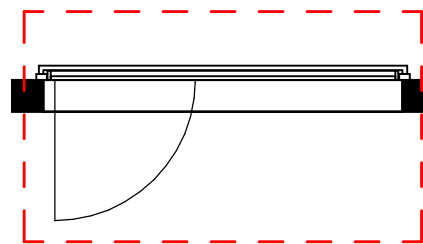
Optie 9402000\_9701800



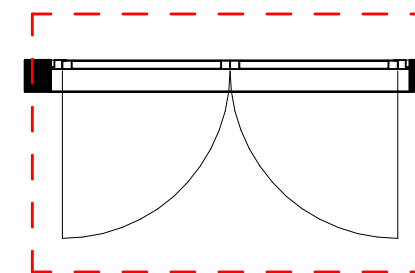
9701300\_loopdeur in garagedeur



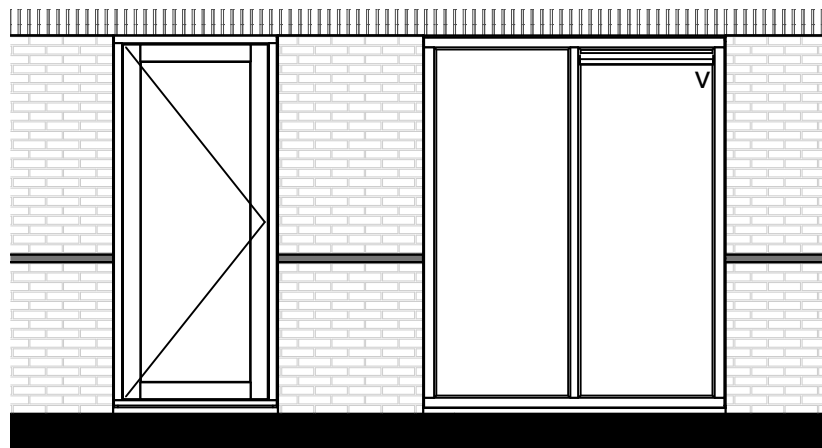
9701900\_Dubbele garagedeur



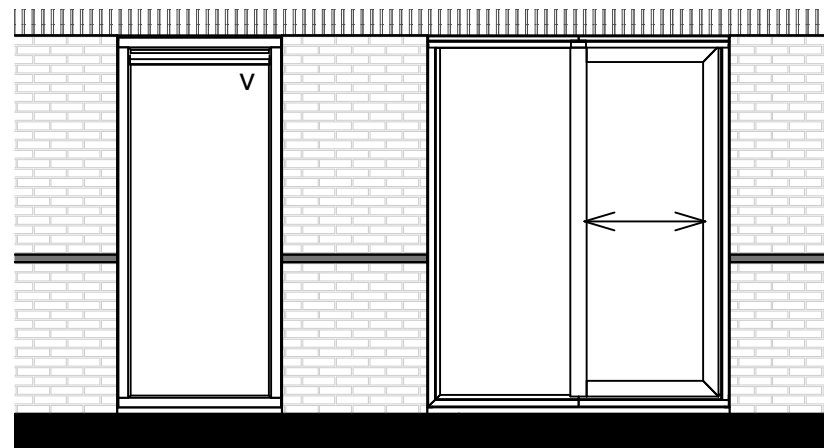
9701300\_loopdeur in garage deur



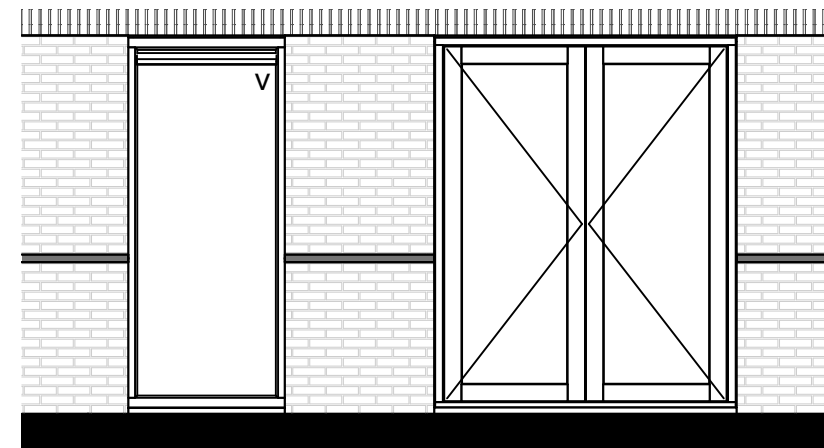
9701900\_Dubbele garagedeur



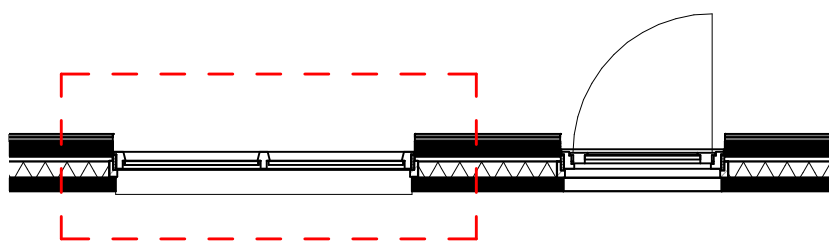
9400900 Dubbele pui met vast glas tot maaiveld



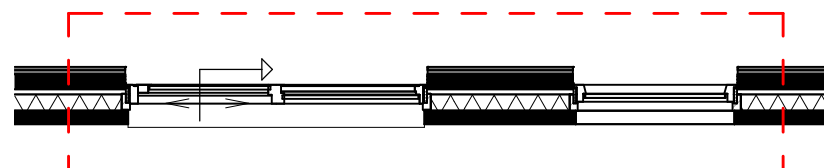
9402500 Pui met schuifdeur en Pui tot maaiveld



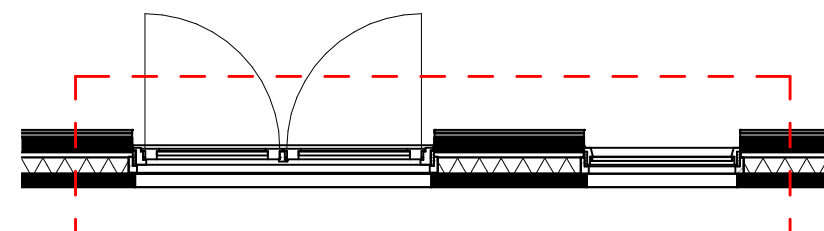
9402400 Pui met dubbele deuren en Pui tot maaiveld



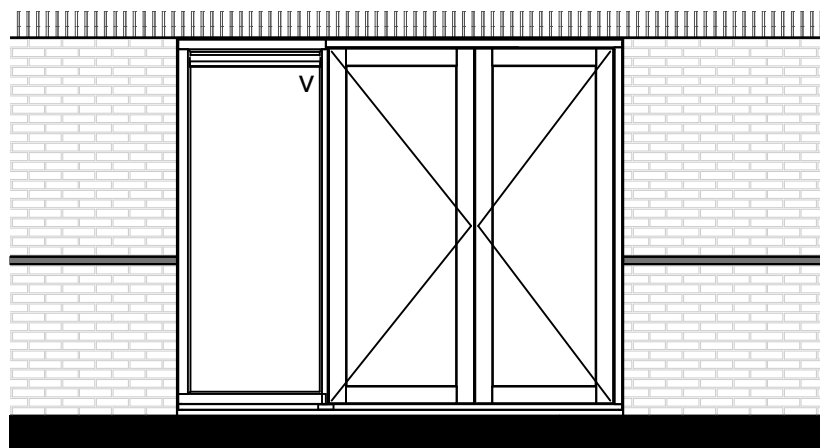
9400900 Dubbele pui met vast glas tot maaiveld



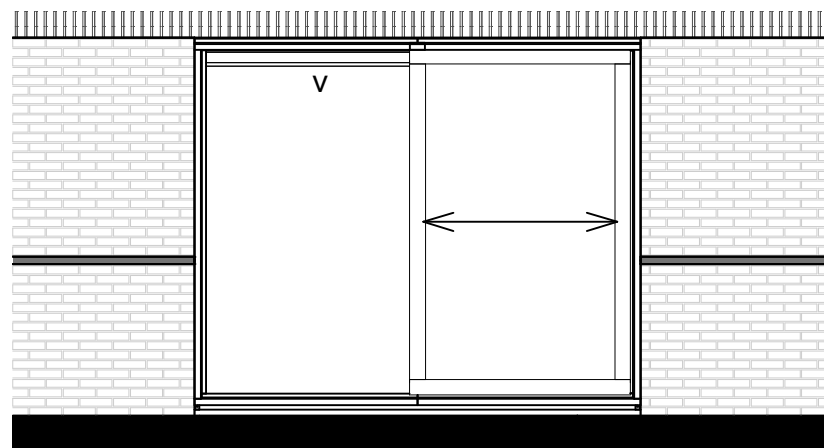
9402500 Pui met schuifdeur en Pui tot maaiveld



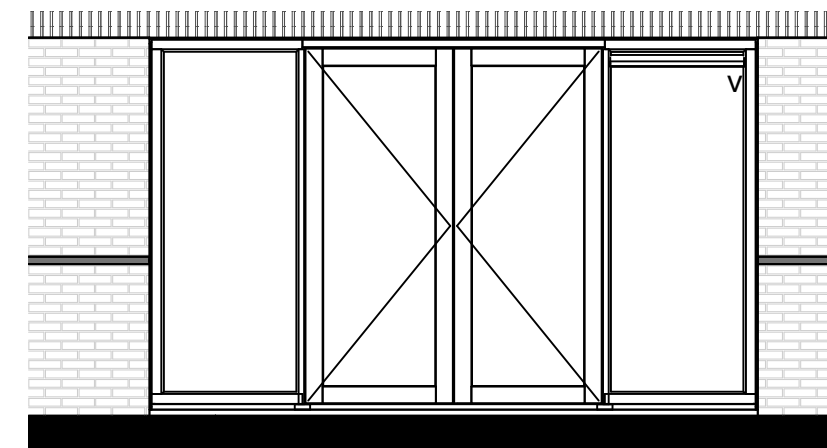
9402400 Pui met dubbele deuren en Pui tot maaiveld



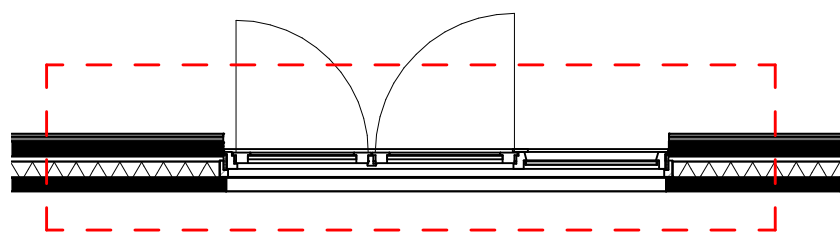
9401500 Pui breed 2,95m1 met dubbele deuren



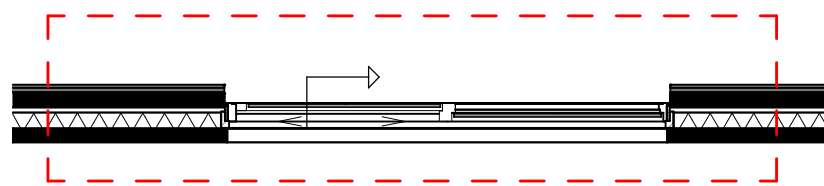
9402600 Pui breed 2,95m1 met schuifdeur



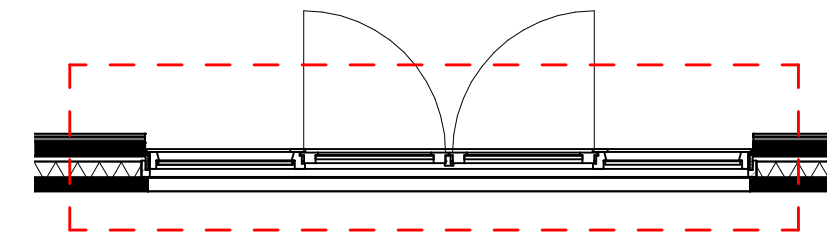
9402700 Pui breed 4,0m1 met dubbele deuren



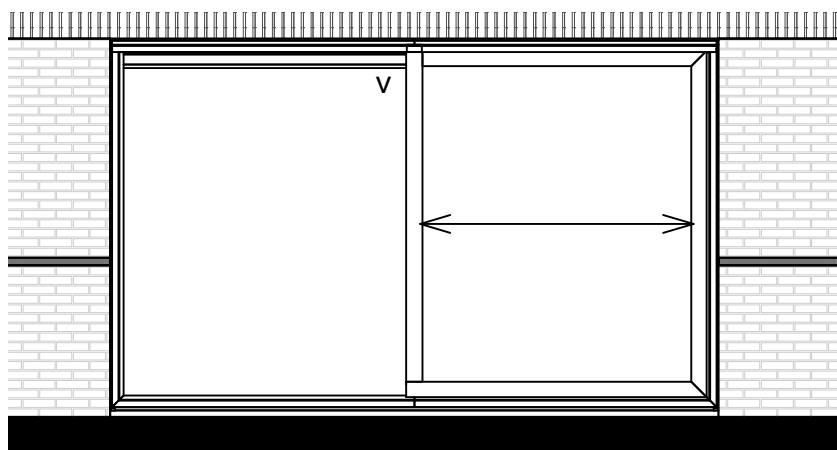
9401500 Pui breed 2,95m1 met dubbele deuren



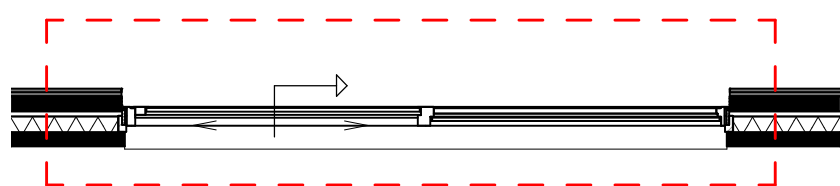
9402600 Pui breed 2,95m1 met schuifdeur



9402700 Pui breed 4,0m1 met dubbele deuren



9402800 Schuifpui breed 4,0m1

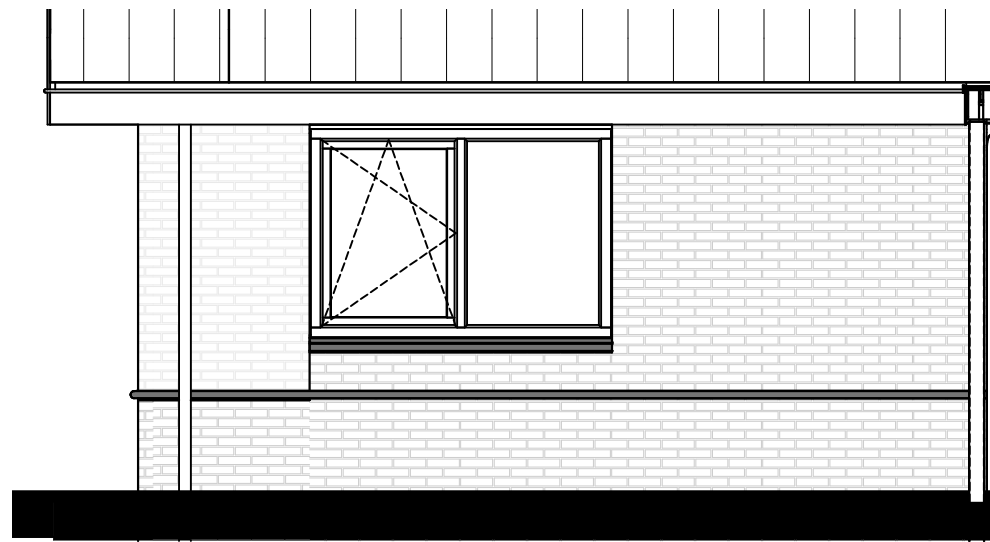


9402800 Schuifpui breed 4,0m1

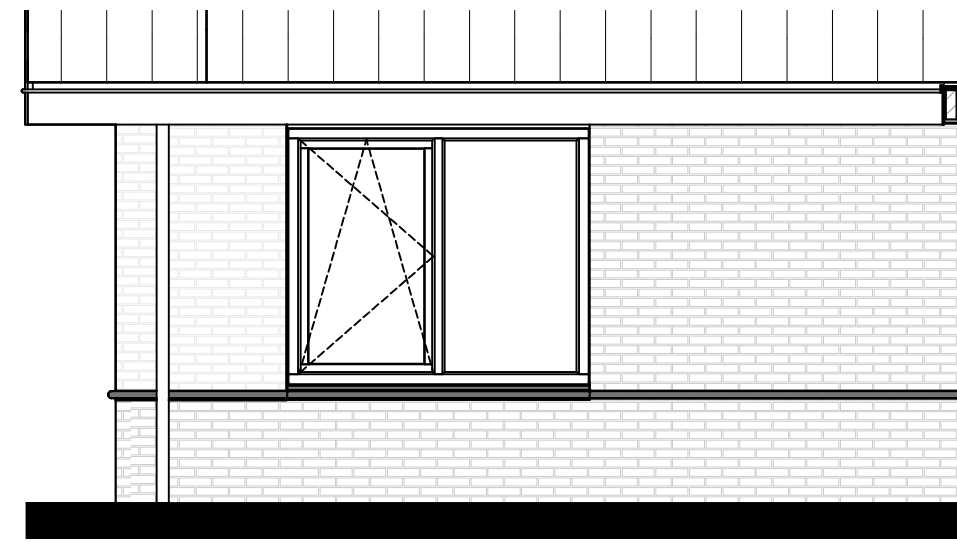


Project	Nieuwbouw 96 woningen plan Vierslag				
15265.005	te Elst				
Blad	Puien achtergevel type A-C-D-E				
280-0-109	Verkooptekeningen Bouwkunde				
Versie 4	28-09-2015	Definitief	RGr	EH	Schaal 1:50

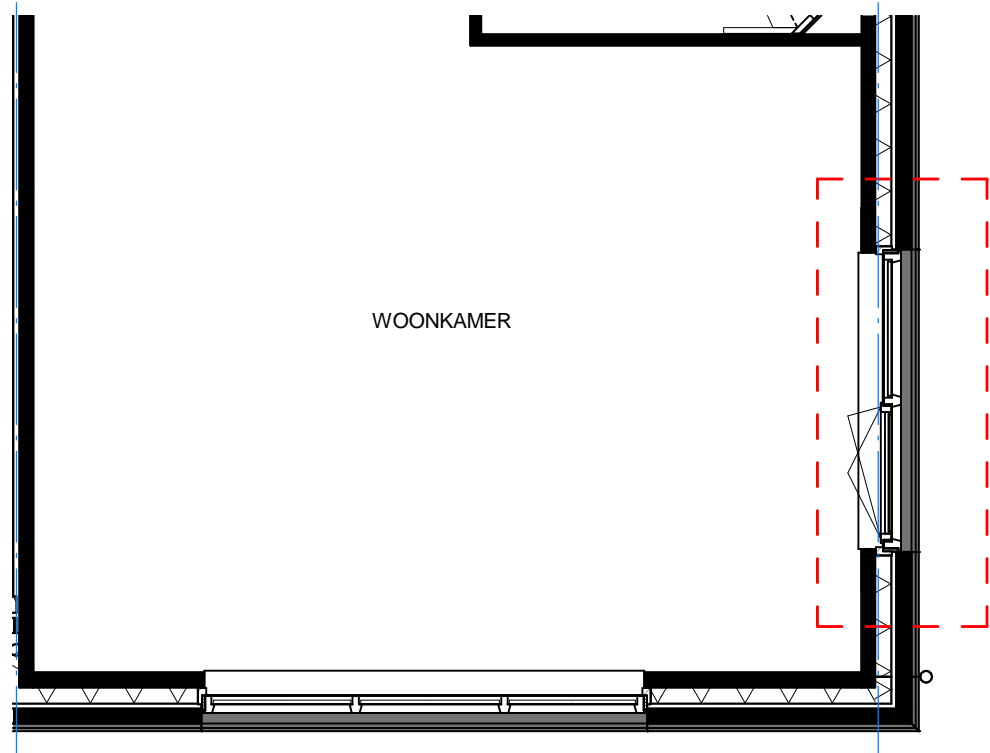




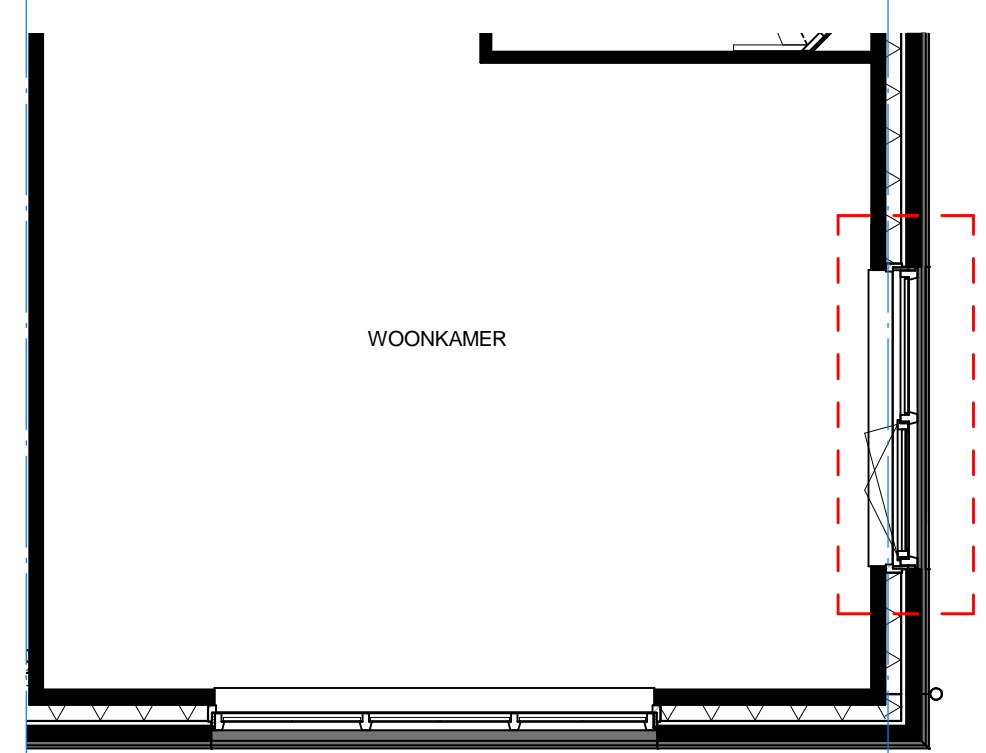
9400400 Zijgevelkozijn (circa 2.000 x 1.400 mm)



9400500 Zijgevelkozijn (circa 2.000 x 1.700 mm)

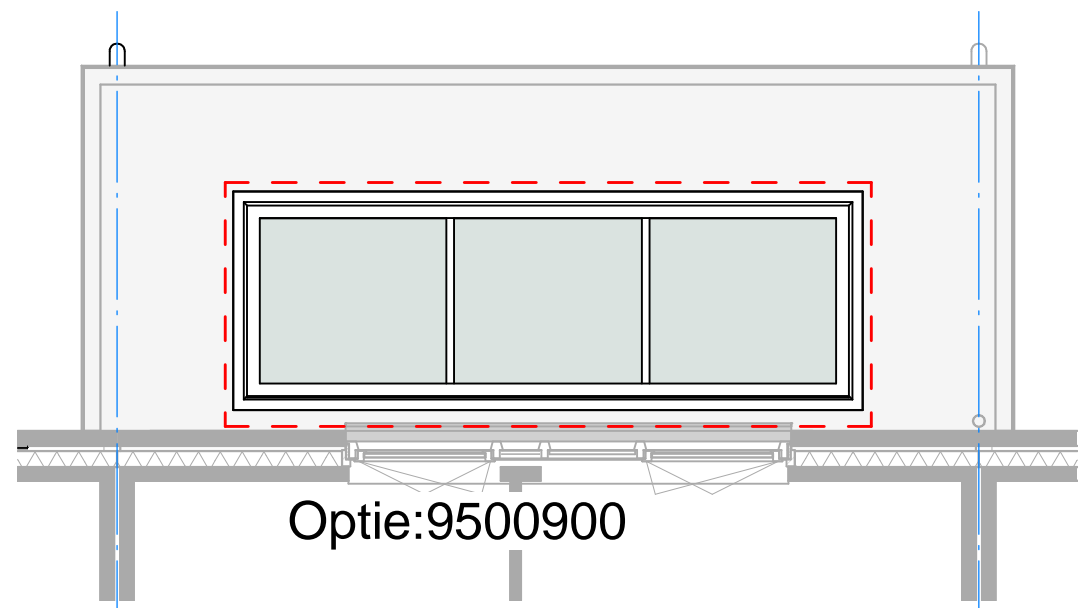


9400400 Zijgevelkozijn (circa 2.000 x 1.400 mm)



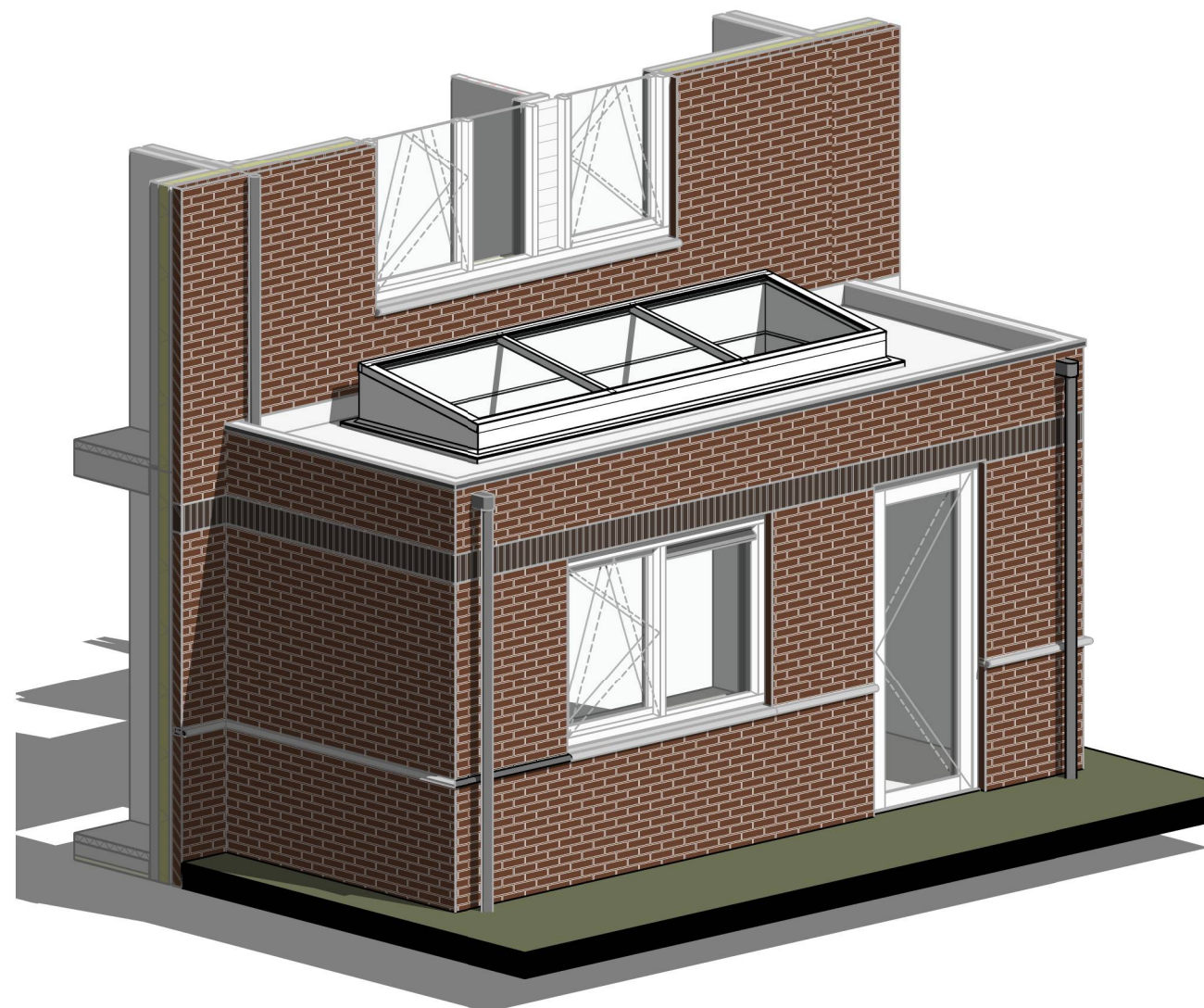
9400500 Zijgevelkozijn (circa 2.000 x 1.700 mm)





Optie:9500900

9500900\_Lichtstraat ca. 1.300 x 4.000mm



9500900\_3D Lichtstraat



9500900\_Lichtstraat impressie gezien van binnen



Project  
15265.005

Nieuwbouw 96 woningen plan Vierslag  
te Elst

Blad  
280-0-111

Lichtstraat optie voor type A-C-D-E  
Verkooptekeningen Bouwkunde

Versie 4

28-09-2015 Definitief RGr EH Schaal 1:50

